

1ST
4 IN INDIA
DECADES
30 COUNTRIES
100 PROFESSIONALS
200 + PROJECTS
₹500 MN TURNOVER
(\$ 9.0 MN)



J.P. MUKHERJI & ASSOCIATES PVT. LTD.

SUGAR & ALLIED INDUSTRIES CONSULTANT

Sugar • Sugar Refinery • Power Generation • Ethanol • Jaggery • Sugarcane Agriculture

VISION- Connecting Sugar Business with Technology resources to help Sugar and Allied Industry.



**SWEET JOURNEY
OF SUCCESS**

Expertise you can count on.
Success you deserve.

MISSION- We are committed to provide consultancy services for Sugar and Allied Industries. Our motto is to consistently meet or exceed Client's satisfaction in terms of Quality, Cost, & Delivery to be a leader and delight Clients through continual improvement in Quality Management System. We comply with applicable Statutory & Regulatory requirements.

**1ST
IN INDIA**

Pioneering leader driving excellence...

J. P. Mukherji & Associates Pvt. Ltd. (JPMA), India's 1st end-to-end Sugar Industry Consultancy, has prominently marked its superiority in the field of consultancy by achieving remarkable success in full-fledged project management for setting up of a Sugarcane Processing Complex. Today, we lead in bringing innovative designs, impeccable engineering and consultancy services, right from conceptualisation to commissioning of a project.

We command supremacy for our specialisation in new techniques and methodology, strategies which lead to optimisation of the plant capacity, thereby reducing the overall project cost and enhancing efficiency and productivity. We have set milestones in designing equipment and systems for energy conservation. We have also been credited for saving large quantities of fuel, generating surplus bagasse for the cogeneration of electricity and/or for production of paper. Our work is now regarded as an industry benchmark and with years to come, we strive to scale greater heights and conquer newer horizons.



JPMA HEAD OFFICE, PUNE



4 DECADES
of excellence
and counting...



J.P. MUKHERJI
FOUNDER
(1907 - 2003)

JPMA was founded by **Mr. J. P. Mukherji** in 1972 and was incorporated into a private limited company in 1974.

We at JPMA endeavour his vision to provide thorough and value added consultancy solutions for all sugar industry operations. We hold a phenomenal legacy of competence, commitment and credibility. Over the years, JPMA has strengthened its core values, retained transparency in its operation and accredited trust all along by its esteemed clientele.



M. S. SUNDARAM,
MANAGING DIRECTOR



T. S. RAO,
JT MANAGING DIRECTOR



D. S. NIKAM,
TECHNICAL DIRECTOR



SHIRISH KARANDIKAR,
DIRECTOR PROJECTS



S. G. DEUSKAR,
DIRECTOR COMMERCIAL

25 COUNTRIES

And this is just the beginning...

FINCHAA SUGAR FACTORY - ETHIOPIA



India, which commands the largest sugar industry in the world, is the principal market for JPMA. However, within 10 years of its coming into existence, JPMA firmly established itself internationally and worked for the three principal international financial institutions - the World Bank, Asian Development Bank and African Development Bank. In recent years, major overseas projects handled by JPMA have been in Africa.

MAJOR NATIONAL PROJECTS IN:

- Andhra Pradesh
- Bihar
- Gujarat
- Haryana
- Karnataka
- Madhya Pradesh
- Maharashtra
- Odisha
- Punjab
- Rajasthan
- Tamil Nadu
- Telangana
- Uttar Pradesh
- West Bengal

KAKIRA COGEN BOILER-UGANDA



INTERNATIONAL FOOTPRINT:

- Bangladesh
- Ethiopia
- Fiji
- Ghana
- Indonesia
- Jamaica
- Kenya
- Liberia
- Mauritius
- Mexico
- Morocco
- Mozambique
- Myanmar
- Nepal
- Nigeria
- Pakistan
- Philippines
- Rwanda
- Saudi Arabia
- Sri Lanka
- Sudan
- Tanzania
- Uganda
- Zambia

TEAM OF EXCELLENCE



100+ PROFESSIONAL TECHNOCRATS IN-HOUSE

Top of class expertise to count on...

TECHNICAL SESSION



JPMA consists of an exceptional team of seasoned experts with proficiency in varied fields which impart precise, value added solutions customised to respective Clients.

JPMA is proud to have a permanent staff of 130, with 100 experts consisting of Sugar Technologists, Chemical, Electrical, Instrumentation, Mechanical, Power Plant Engineers, Energy Auditors, Economists & Financial Analysts and Associate Experts for all aspects of Sugarcane soil survey, Agronomy, Hydrology, Land Preparation, Field Mechanisation, Irrigation Systems, Harvesting and Transportation, etc.

ENGINEERING OFFICE



Being at JPMA doesn't mean all work. Every year we celebrate the JPMA day, a day where Team JPMA participates in cultural dances and fun activities that enhance the special bond we all cherish as being a part of this great family. Our entire JPMA family along with our spouses and children enjoy an outdoor picnic every year, away from the daily routine, where we all relax and rejuvenate and have a memorable time.

OUTDOOR PICNIC



CULTURAL PROGRAMME



METAHARA 50 KLPD ETHANOL PLANT - ETHIOPIA



KAKIRA SUGAR LTD. - UGANDA



KWALE SUGAR FACTORY - KENYA



200+ PROJECTS

Expert solutions for sweeter success...

JPMA takes immense pride in having delivered the best results, fulfilling all contractual obligations and ensuring tailor-made solutions as per Client requirements.

JPMA's specialisation has delivered incredible success to its Clients and has gained a reputation and trust which brings us new Clients through referrals. Today, JPMA has a strong presence in India as well as all over the world. We stand out for our reliable expertise, competitive advantage, commitment to high performance, trust and credibility.

TENDAHO SUGAR FACTORY - ETHIOPIA



CENTRIFUGAL STATION



Important projects in India:

- **MAHARASHTRA** - KGS Sugar & Infra Corporation Ltd., Nashik, Baramati Agro Ltd., Baramati; Godavari Sugar Mills Ltd., Lakshmiwadi; Dalmia Bharat Sugar & Industries Ltd.; Shree Chhatrapati Shahu SSK Ltd., Sanjivani SSK, Ajinkya Tara SSK, Goldfinger jaggery and 25 Others
- **KARNATAKA** - Athani Farmers Sugar Factory Ltd. Belgaum, Shree Renuka Sugar Mills Ltd., Belgaum; Ugar Sugar Work Ltd. Sameerwadi, Nandi SSK; Shivashakti Sugar Ltd., Mylar Sugars Ltd. Gaudar jaggery Project and 11 others
- **PUNJAB** - Bhogpur Sugar Mill Punjab, Bhagwanpura Sugar Mills, Dhuri
- **BIHAR** - Harinagar Sugar Mills Ltd., Harinagar; Jayashree Sugar Majhaulia and 4 others
- **UTTAR PRADESH** - Ajudhia Sugar Mills, Raja-Ka-Sahaspur; Dalmia Sugar, Jawaharpur and Nigohi units; Triveni Engineering, Sabitgarh and Chandapur units; Mawana Sugars, Titawi, Mawana and Nanglamal units, J.K. Sugars, Agauta Sugars & Chemicals Ltd., India Glycols Ltd. and 36 others
- **GUJARAT** - Shree Madhi Vibhag Khand Udyog S.M. Ltd., Madhi; Shree Chalthan Vibhag Khand Udyog S. M. Ltd., Chalthan
- **MADHYA PRADESH** - Jiwajirao Sugar Co. Ltd., Dalauda and Bhopal Sugar Mills Ltd., Sehore
- **RAJASTHAN** - Ganganagar Sugar Mills Ltd., Sriganganagar and Mewar Sugar Mills Ltd., Bhupalsagar
- **HARYANA** - Saraswati Sugar Mills, Yamunanagar
- **TELANGANA** - Nizam Sugars
- **ANDHRA PRADESH** - Andhra Sugars Ltd., W. Godavari and 6 others
- **TAMIL NADU** - Ambur Co-op. Sugar Mills Ltd., Ambur and 4 others
- **WEST BENGAL** - Ahmedpur Sugar Mills, Ahmedpur
- **ODISHA** - Western India Sugar and Chemicals Ltd., Kalhandi

EVAPORATION STATION



TRIVENI ENGINEERING - SABITGARH



SHREE CHATRAPATI SHAHU SSK - KAGAL



Important international projects:

- **SAUDI ARABIA** - Project Management Consultancy (PMC) Services for setting up stand alone Sugar Refinery of 2500 TPD refined sugar
Projects: Durrah Advanced Development Co. Yanbu Port. (Ongoing)
- **ETHIOPIA** - Rehabilitation, Optimisation, Expansion Study, Financial Evaluation, Technical Process / Energy Audit, Turnkey Consultancy & Cogeneration of Power
Projects: Finchaa, Metahara, Tendaho, Wonji Shoa & Abaya Galana
- **UGANDA - Kakira** - Complete services for inception stage to project commissioning for major Rehabilitation Project, Appraisal Missions, Factory Expansion & 51.1 MW Cogeneration Project.
Scoul - Feasibility Study for 25 MW Cogeneration Project.
Projects: Kakira & Scoul
- **KENYA** - Rehabilitation, Modernisation, Optimisation, Technical Audit, Feasibility Report for Sugar Factories
Projects: Kwale, West Kenya, Nzoia, Sony, Chemelil
- **MOROCCO** - Review, Modernization and Optimization of Sugar Factories. Engineering Assistance for 70 ton Steam Generation Plant, Sugar Refinery.
Projects: Ksibia (Surac), MbK (Sunacas) and Sucafor
- **NIGERIA** - Engineering, Procurement, Construction and Management for Rehabilitation to 3500 TCD & Expansion to 6000 TCD
Projects: Savannah Sugar Plant (Dangote Sugar Refinery)
- **FIJI** - Review, Modernization and Optimization of Sugar Factories, Sugar Refineries Syrup Mills and Cogeneration Plant
Projects: Lautoka, Rarawai, Penang and Labasa sugar mills.
- **SUDAN** - 13MW Cogeneration, Project Management Assistance, Material Management & Systems, Rehabilitation of Evaporator Station, C/F Station, Juice Liming & Pressure Stabilisation System, Training, Engineering for Boiler Rehabilitation
Projects: Assalaya, Guneid, New Halfa, Sennar, Blue Nile, Tamboul
- **TANZANIA** - Project Management Consultancy for 1500 TCD, Sugar plant expanded to 2500 TCD
Projects: Bagamoyo Sugar Co.
- Setting up Sugar Factories of 2500 TCD, overall consultancy
Projects: Kagera

FINCHAA DISTILLERY - ETHIOPIA



KAKIRA COGEN PROJECT - UGANDA



KWALE SUGAR FACTORY, KENYA - MODEL





IT ALL BEGINS HERE

₹ **500** MN TURNOVER
(\$ 8 MN)

Numbers that count...

We at JPMA, specialise in all aspects of Consultancy for sugarcane, sugar & by-products. We lay special emphasis on the development of new technologies for the production of raw, refined, white sugar manufacturing; cogeneration of power and production of rectified spirit, ethanol, extra neutral alcohol and jaggery. We deliver total Engineering and Consultancy services right from concept up to commissioning and performance testing for sugar, bagasse/bio-mass based Cogeneration/Power generation and molasses/grain based Distillery/Ethanol projects.

Our fields of specialisation include:

- Sugar Factory
- Sugar Refinery
- Power Generation/Cogeneration
- Distillery/Ethanol
- Jaggery
- Sugarcane Agriculture



Our services include:

From Short Term Assignments Such As:

- Pre-feasibility & Feasibility Study (FSR)
- Detailed Project Report (DPR)
- Technical Due-diligence Report
- Expansion / Modernization / Trouble Shooting
- Energy Audit

To Long Term Assignments Such As:

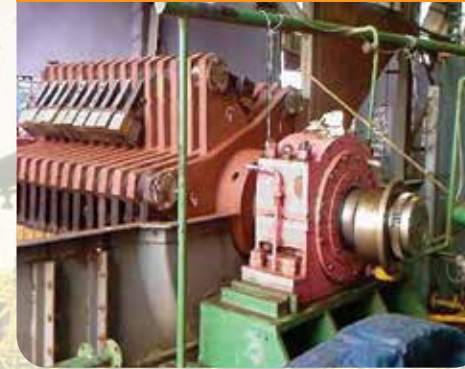
- Management and Technical Advisory
- Detailed Designing and Engineering (DDE)
- Procurement Assistance
- Project Management Services (PMS)
- Quality Inspection
- Supervision For Erection & Commissioning
- Factory Operation Management (O&M)
- Health, Safety & Environment Management (HSE)

JYOTI SUGAR ENGINEERING PVT. LTD. (JSEPL)

A sister company of
J. P. Mukherji & Associates Pvt. Ltd. (JPMA)

PRODUCTS DEVELOPED IN-HOUSE BY JPMA (MARKETED BY JSEPL TO VARIOUS CLIENTS)

CANE FIBRIZER



Products Developed Through In-house R&D:

- Moisture Control Unit (MCU)
- JPMA Mill Coupling
- Cane Fibrizer
- Clarifier Upgradation For Capacity Increase
- Continuous Juice Sulphiter
- Continuous Sulphur Burners
- Continuous Vertical Crystallizers
- Direct Contact Juice Heaters
- Electronic Juice Weighing Scale
- Milling System Improvement
- Pressure Feeders
- Rain Tray Condensers
- Semi Kestner Evaporators
- Vacuum Pans (With Mechanical Circulators)
- Water Jet Air Extractors For Condensers

MECHANICAL CIRCULATOR



NEW Invention

MOISTURE CONTROL UNIT (MCU)

- Bagasse moisture reduction
- Increases primary extraction
- Increases overall mill extraction



MILL COUPLING

- Extended life to gear and mill shaft bearing
- Mill capacity improvement
- Suitable for mill size from 30" X 60" to 50" X 100"
- Negligible maintenance

MILL COUPLING



CONTINUOUS VERTICAL CRYSTALLIZER



JYOTI SUGAR ENGINEERING PVT. LTD. (JSEPL)

A sister company of J. P. Mukherji & Associates Pvt. Ltd. (JPMA)
Engineering through JPMA (Services by JSEPL)

METAHARA SUGAR COMPANY, ETHIOPIA

RETUBING & UPGRADATION OF BOILER

JSEPL has carried out following bagasse fired boiler rehabilitation work including in African Countries from its design, manufacture and supply of pressure parts, fans, refractory material, grate bars, VFDs, fire side chemical system etc. up to its commissioning.

- Finchaa Sugar Company, Ethiopia retubing up 2 no. Boiler of 65 TPH
- Metahara Sugar Company, Ethiopia retubing up 1 no. boiler of 56 TPH
- Sony Sugar Company, Nyanza, Kenya - retubing up 1 no. boiler
- Chemelil Sugar Company, Kenya - retubing up 1 no. boiler

FINCHAA SUGAR COMPANY, ETHIOPIA



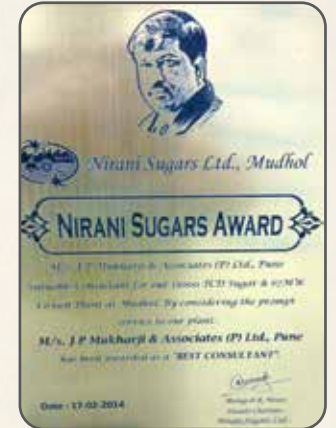
Awards and Certifications

CONSULTING ENGINEERS ASSOCIATION OF INDIA (CEAI)



NATIONAL AWARD 2017 EXCELLENCE IN PROJECT ENGINEERING

Export Import Bank of India (EXIM Bank) Empanelled Consultant



- ISO 9001:2015 Certified Company
- Consulting Engineers Association of India (CEAI)
- Maharashtra Chamber of Commerce, Industries and Agriculture (MCCIA)
- The Federation of Indian Export Organizations (For Consultancy) (FIEO)
- Engineering Export Promotion Council



DISTINGUISHED CREDENTIALS

INTERNATIONAL

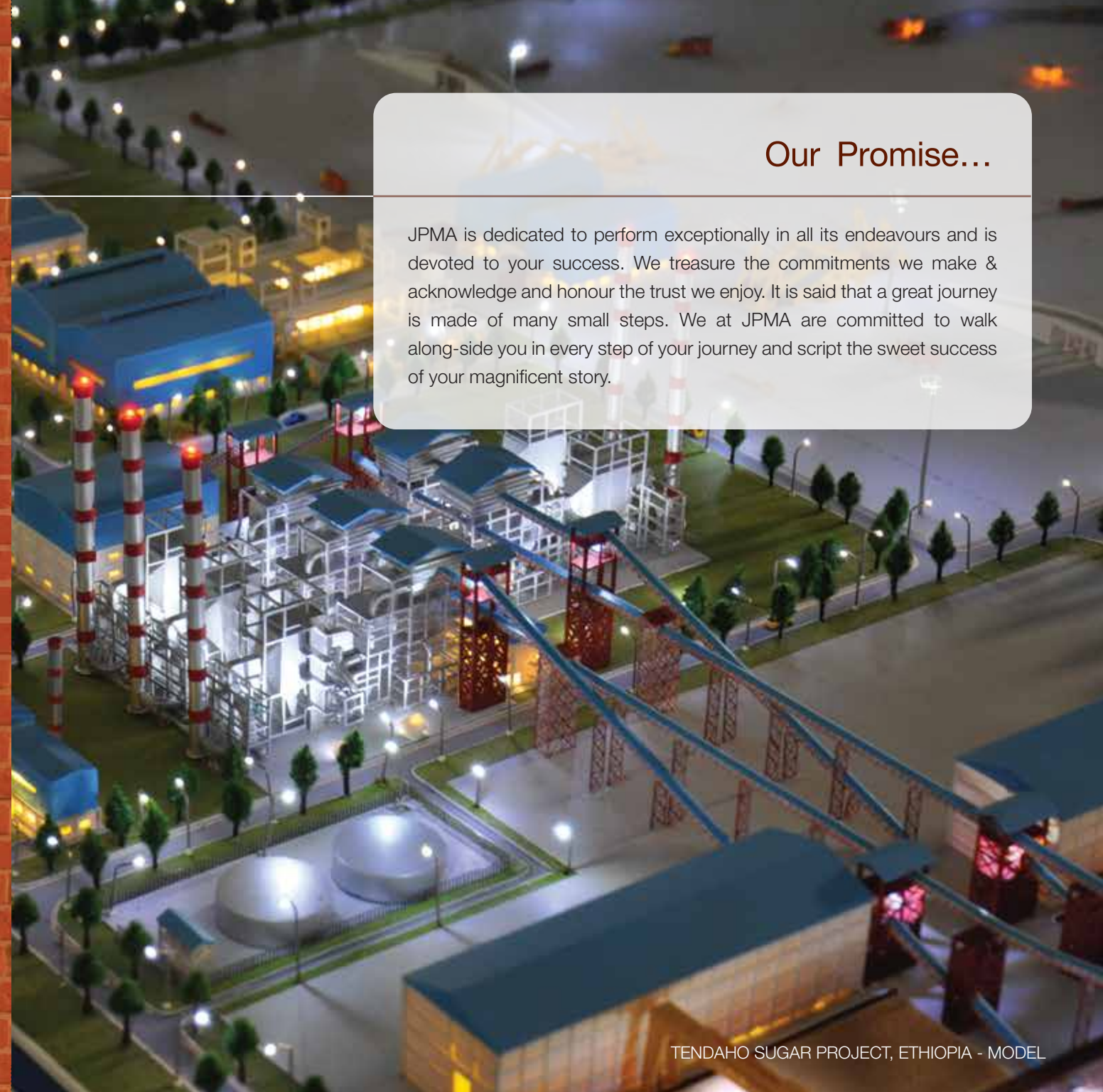


DOMESTIC



Our Promise...

JPMA is dedicated to perform exceptionally in all its endeavours and is devoted to your success. We treasure the commitments we make & acknowledge and honour the trust we enjoy. It is said that a great journey is made of many small steps. We at JPMA are committed to walk along-side you in every step of your journey and script the sweet success of your magnificent story.



TENDAHO SUGAR PROJECT, ETHIOPIA - MODEL



J. P. MUKHERJI
1907 - 2003



J.P.MUKHERJI & ASSOCIATES PVT. LTD.

Jyoti House, 172, Dahanukar Colony,
Kothrud, Pune 411 038, Maharashtra (INDIA)

Tel: +91 20 2539 7303

Fax: +91 20 2539 9287

E-mail: info@jpma.org.in | marketing@jpma.org.in

www.jpma.org.in